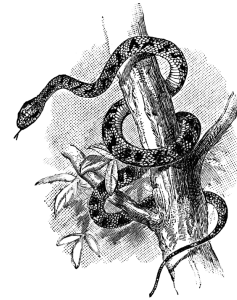


Certificate of Membership



Founded 1903



IN THE

HARDY WOMEN'S SOCIETY

THIS CERTIFIES THAT

IS A MEMBER OF THE HARDY WOMEN'S SOCIETY AND AS SUCH SHALL BE ENTITLED TO ANY AND ALL PRIVILEGES ASSOCIATED WITH THIS HONOUR

PRESENTED THIS _____ DAY OF _____

Penelope Eve Pomegranate Agnes Snopdragon
HARDY WOMEN'S SOCIETY PRESIDENT

